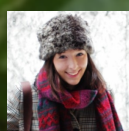




Travel Guides designed by insiders.

LONDON'S BEST PARKS - FOR WHEN YOU NEED TO ESCAPE

Escape the concrete and the
crowds in London's best parks.



Mandy Hegarty
Travel writer

ABOUT US

THE BUGGL TEAM.

We are a small team banded together to solve the major problems that exist around travel planning. We've lived in your shoes for years, trying to seek authentic and matched trip advice to no avail. Buggl was built as your vehicle to ride in every time you need inspiration about a place to go.

OUR MISSION.

Our goal is to give people a better opportunity to experience delightful life moments when they travel. This only happens when people begin to trust in one another and not on reviews or ratings of places online anymore. Bringing the life back to travel means pulling local people out of the shadows of those review sites and onto a place where they share their expertise on what they love to do in their location. It's only possible to travel well by harnessing the relationship between travelers and locals.

Our aim is give everyone an equal chance to have beautiful trips.

OUR STORY.

This isn't a company. If you unraveled our DNA it would read like a passport stamped with ink from all over the world. We've each had unique and memorable experiences traveling down the street or around the world that have changed us as individuals and humans. If you've traveled like us, you know it's possible to grow as a person when you travel right. If you haven't traveled like us, this platform will give you the ability to do so. It's time to TRUST in other people again to help navigate you through the world.



ABOUT ME



Mandy Hegarty

Travel writer

Traveler Since

1987

Age

26

Interests and Activities

Travel writing, Film, Food, Drink

WHO AM I?

Mandy Hegarty is a 20-something freelance writer who covers all things travel, food and film. Born and bred in Dublin, she has spent the last few years living and working in New York and London, where she is now based. She started south of the Thames before moving up to the East End, and works as a sub-editor for expert travel writing service World Words (www.world-words.com). Some of her favorite things include good coffee, cheese, gothic literature, Christmas, markets and cinemas.

WHAT I KNOW ABOUT TRAVEL?

Travel has always been a strong passion of mine. I've lived in Ireland, the UK, the US and Canada, and have traveled extensively around Europe and Latin America.

A wooden park bench with vertical slats on the backrest, situated on a grassy lawn. The background is filled with dense green trees and bushes. The scene is brightly lit, suggesting a sunny day. A semi-transparent grey box with a red header is overlaid on the left side of the bench.

OVERVIEW

Everybody needs some time out from the chaos of city living and urban exploring, and there's no better place for relaxation than in London's leafy parks.

LOCAL PERKS AND KNOWLEDGE

London can be a noisy full-on place that can leave even the most dedicated urbanite yearning for a bit of nature. When you need a break from all the concrete and crowds, the city's parks and gardens can offer some much-needed respite. Of course, ever-popular Hyde Park and Regent's Park have lots to offer, but they aren't your only options. if you want to discover some new green spaces in London, check out this list of the city's best parks.

A close-up photograph of several vibrant pink roses in full bloom, surrounded by lush green foliage. The roses have multiple layers of petals, some showing a gradient from light pink to deeper red. A semi-transparent red rectangular box is positioned horizontally across the middle-left of the image, containing the text 'LOCAL SECRETS' in white, bold, sans-serif capital letters. The background is softly blurred, showing more green leaves and a hint of a white flower in the upper left.

LOCAL SECRETS



Tower Hamlets Cemetery Park



Offbeat Secret

Cantrell road, London E3, UK

This nature reserve was one of seven large Victorian cemeteries built around the city in the 1830s and 1840s, collectively known as the “Magnificent Seven.” Looking at the decaying gravestones and dense greenery, it appears a little neglected, but the overgrown, wild nature of this park only adds to its atmospheric charm. With winding paths leading through thick woodlands, flowers and plants creeping over fallen headstones, and a population of fluttering butterflies, birds and bees, this little-known park provides a welcome escape from urban civilization.

WHAT I LOVE ABOUT IT HERE

The atmospheric woodland

RATING



Make Your Trip

CATEGORY

Quiet

Hidden

NEED TO KNOW

Only Locals

Underrated

Offbeat



Victoria Park, London, United Kingdom

RATING



Good Detour

CATEGORY

Outdoor

Kids

NEED TO KNOW

Park



See and Do

274 Old Ford Road, London E3 5SP, UK 020
8980 0030

This East End park originally opened in 1845 and has recently undergone a multimillion pound makeover to restore it to its former glory. It's still a touch less prim and proper than London's Royal Parks, which gives it a more laid-back appeal. There are lakes, countless varieties of trees, a blooming Old English Garden and winged inhabitants that include ducks, geese and a flock of exotic parrots, who bring a much-needed injection of color to London's frequently grey skies.

WHAT I LOVE ABOUT IT HERE

The duck-filled lakes and bars nearby

Hampstead Heath, London, United Kingdom



See and Do

170 Highgate Road, London NW5, UK

This sprawling green expanse boasts a natural, wild landscape with thick woods, bog, hedgerows, ponds and overgrown grass fields. It's about as rural and bucolic as you can get without leaving the city. Climb up Parliament Hill for views of the London skyline or, if the weather is good, cool off with a swim in one of its ponds.

WHAT I LOVE ABOUT IT HERE

The views of the London skyline

RATING



Good Detour

CATEGORY

Nature

Outdoor

Views

NEED TO KNOW

Park



Holland Park

RATING



Worth a Peek

CATEGORY

- Walks
- Beautiful
- Outdoor

NEED TO KNOW

Park



See and Do

Holland Walk, Kensington, London W8, UK

This small park was once the grounds of an old Jacobean mansion, which was mostly destroyed during World War II. These days it's a pretty and peaceful urban hideout, where Kensington locals come to get away from it all. The Japanese Garden is a tranquil place to relax and revitalize, while what's left of the old mansion is now a decent restaurant. There's also plenty of wildlife, including friendly squirrels that are bold enough to eat nuts directly from hands, as well as ducks and showy peacocks.

WHAT I LOVE ABOUT IT HERE

The peacocks



Richmond Park



See and Do

Unnamed Road, Richmond, Greater London
TW10 5HR, UK

Richmond Park feels like the real deal — more countryside proper than contrived urban park. It is one for those who truly want a taste of English rural life. It is located about 30 minutes or so from the center of London by train and it's the largest of London's Royal Parks, covering an area of around 2,500 acres. Wander around its vast interior and you're likely to encounter a herds of wild red or fallow deer, who roam here freely. Head to King Henry VIII Mound to admire the uninterrupted views of London, which reach as far as St. Paul's Cathedral.

RATING



Make Your Trip

CATEGORY

Nature

Outdoor

Walks

NEED TO KNOW

Park

WHAT I LOVE ABOUT IT HERE

Its wild and rural landscape

BEFORE YOU GO

I. WHAT TO TAKE

Comfortable walking shoes.

II. GETTING AROUND

All these parks can be reached by the Tube or by bus.

III. MONEY AND TIPPING

All these parks are free to enter.

IV. SAFETY AND SECURITY

All these parks are generally very safe.

V. USEFUL PHONE NUMBER, WEBSITES AND LOCAL APPS

Most London parks are open from sunrise to sunset.

VI. Local Notes

Depending on the season and the weather, you may also want to bring rain gear or food and drink for a picnic. Many of London's larger parks, such as Victoria Park and Hampstead Heath, have playground facilities for children.



www.buggl.com